

## Open-Tray Technique *Instructions for use with implants*

### STEP ONE

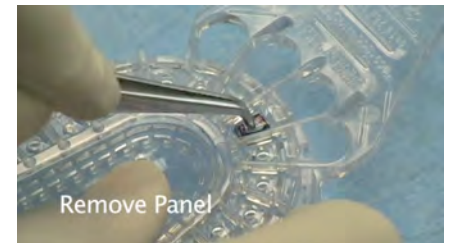
Determine and mark panel(s) for removal.



### STEP TWO

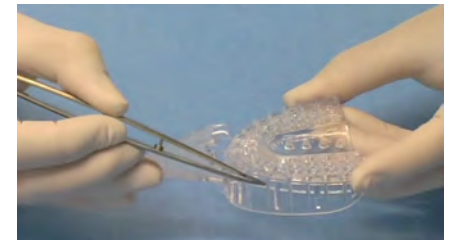
Remove marked panel(s) using tip of cotton pliers.

- Insert pinched tip of cotton pliers into hole and gently pry out panel.
- For facially angled impression copings, remove edge panel(s) and break off thin wall membrane(s).



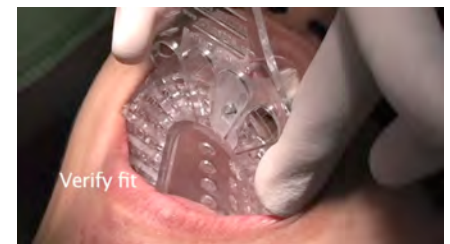
### STEP THREE

When working with multiple panel openings, cover large holes with boxing wax.



### STEP FOUR

Verify hole alignment with the impression coping.



### STEP FIVE

Apply impression material and make impression.



For a short clinical demo, watch this video: <http://youtu.be/LdDudFKA5WI>